

# GMAF - SOAP Client

The GMAF provides several APIs for easy access. One of the most important APIs is the GMAF SOAP API. Typically, when using the framework, you will receive an URL and a collection password. Both can be employed to connect to the framework.

For example:

URL: <http://gmaf.stefan-wagenpfeil.de:8481/gmaf/gmafApi>

Collection-Password: test123

When opening this URL in the browser, you should see something like this:

## Webservices

End Point	Informationen
ServiceName: { <a href="http://api.gmaf.swa.de/">http://api.gmaf.swa.de/</a> }GMAF_Facade_SOAPIImplService	Adresse: <a href="http://gmaf.stefan-wagenpfeil.de:8481/gmaf/gmafApi">http://gmaf.stefan-wagenpfeil.de:8481/gmaf/gmafApi</a>
PortName: { <a href="http://api.gmaf.swa.de/">http://api.gmaf.swa.de/</a> }GMAF_Facade_SOAPIImplPort	WSDL: <a href="http://gmaf.stefan-wagenpfeil.de:8481/gmaf/gmafApi?wsdl">http://gmaf.stefan-wagenpfeil.de:8481/gmaf/gmafApi?wsdl</a>
	Implementierungsklasse: de.swa.gmaf.api.GMAF_Facade_SOAPIImpl

First, you need to create a SOAP client based on the tools and programming language you want to use. In the following, SOAP-UI as a very generic, text-based, low-level client is used to illustrate the API and the corresponding calls.

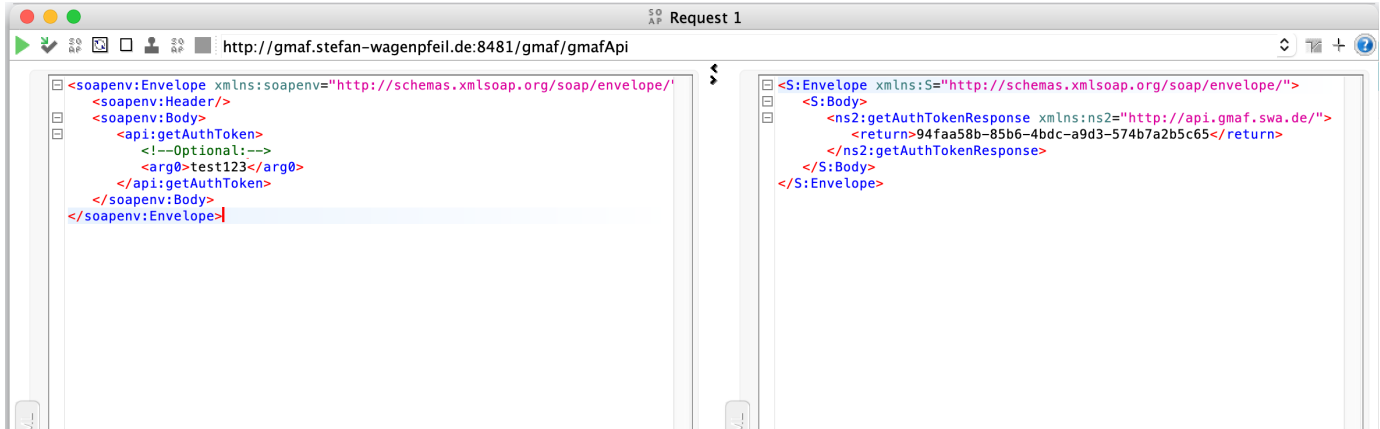
Typically, to use the API, you might need a WSDL file, which can be derived by adding ?wsdl to above URL:

<http://gmaf.stefan-wagenpfeil.de:8481/gmaf/gmafApi?wsdl>

This XML file does not appear to have any style information associated with it. The document tree is shown below.

```
<!--
  Published by JAX-WS RI (http://jax-ws.java.net). RI's version is JAX-WS RI 2.3.2 git-revision#3d0bba4.
-->
<!--
  Generated by JAX-WS RI (https://github.com/eclipse-ee4j/metro-jax-ws). RI's version is JAX-WS RI 2.3.2 git-revision#3d0bba4.
-->
<definitions xmlns:wsu="http://docs.oasis-open.org/wss/2004/01/oasis-200401-wss-wssecurity-utility-1.0.xsd" xmlns:wsp="http://www.w3.org/ns/ws-policy" xmlns:wsp1_2="http://schemas.xmlsoap.org/ws/2004/09/policy" xmlns:wsam="http://www.w3.org/2007/05/addressing/metadata"
  xmlns:soap="http://schemas.xmlsoap.org/wsdl/soap/" xmlns:tns="http://api.gmaf.swa.de/" xmlns:xsd="http://www.w3.org/2001/XMLSchema"
  xmlns="http://schemas.xmlsoap.org/wsdl/" targetNamespace="http://api.gmaf.swa.de/" name="GMAF_Facade_SOAPIImplService">
  <types>
    <xsd:schema>
      <xsd:import namespace="http://api.gmaf.swa.de/" schemaLocation="http://gmaf.stefan-wagenpfeil.de:8481/gmaf/gmafApi?xsd=1"/>
    </xsd:schema>
  </types>
  <message name="getAuthToken">
    <part name="parameters" element="tns:getAuthToken"/>
  </message>
  <message name="getAuthTokenResponse">
```

To work with the API, you initially have to create an Authentication Token by providing you collection password.



This SOAP-UI example shows, that such a auth-token is represented by a UUID. This token has to be provided for every further API call.

For example, to receive all elements of a collection, you can use the `getCollectionIDs` method of the API. To send a keyword-based query to the framework, you can use the `getQueryByKeyword`-Method, etc. All methods require the auth-token as a first parameter:

```
<soapenv:Envelope xmlns:soapenv="http://schemas.xmlsoap.org/soap/envelope/"
  <soapenv:Header/>
  <soapenv:Body>
    <api:queryByKeyword>
      <!--Optional:-->
      <arg0>109382c4-a7a8-488f-84f2-060d77c9f30f</arg0>
      <!--Optional:-->
      <arg1>cat, dog</arg1>
    </api:queryByKeyword>
  </soapenv:Body>
</soapenv:Envelope>
```

The resulting list in this example would be a list of MMFG IDs. For each MMFG-ID, the method getMMFG would return the details of the MMFG in XML format.

Currently, the API contains the following methods:

Package de.swa.gmaf.api

## Interface GMAF\_Facade

All Known Implementing Classes:

GMAF\_Facade\_SOAPImpl

public interface **GMAF\_Facade**

GMAF API - SOAP implementation facade

### Method Summary

All Methods	Instance Methods	Abstract Methods
Modifier and Type	Method	Description
<b>GraphCode</b>	<b>generateGraphCode</b> (java.lang.String auth_token, <b>MMFG</b> mmfg)	returns a Graph Code for a given MMFG
java.lang.String	<b>getAuthToken</b> (java.lang.String api_key)	returns a new session token
java.util.Vector<java.lang.String>	<b>getCollectionIDs</b> (java.lang.String auth_token)	returns the collection of MMFGs for a given auth_token
<b>MMFG</b>	<b>getMMFG</b> (java.lang.String auth_token, java.lang.String id)	returns a list of recommendations for a given Graph Code
<b>GraphCode</b>	<b>getOrGenerateGraphCode</b> (java.lang.String auth_token, java.lang.String mmfg)	returns a Graph Code for a given MMFG-ID
java.lang.String	<b>getPreviewURL</b> (java.lang.String auth_token, java.lang.String mmfg_id)	returns an URL to preview a MMFG
java.util.Vector<java.lang.String>	<b>getRecommendedAssetIDsByGraphCode</b> (java.lang.String auth_token, <b>GraphCode</b> gc)	returns a list of recommendations for a given Graph Code
java.util.Vector<java.lang.String>	<b>getRecommendedAssetIDsForMMFGId</b> (java.lang.String auth_token, java.lang.String id)	returns a list of recommendations for a given Graph Code
java.util.Vector<java.lang.String>	<b>getSimilarAssetIDsByGraphCode</b> (java.lang.String auth_token, <b>GraphCode</b> gc)	returns a list of similar assets for a given Graph Code
java.util.Vector<java.lang.String>	<b>getSimilarAssetIDsForMMFGId</b> (java.lang.String auth_token, java.lang.String id)	returns a list of similar assets for a given Graph Code
java.lang.String	<b>processAssetFromBytes</b> (java.lang.String auth_token, byte[] bytes, java.lang.String suffix)	processes an asset with the GMAF Core and returns the calculated MMFG
java.lang.String	<b>processAssetFromFile</b> (java.lang.String auth_token, java.io.File f)	processes an asset with the GMAF Core and returns the calculated MMFG
java.lang.String	<b>processAssetFromURL</b> (java.lang.String auth_token, java.net.URL url)	processes an asset with the GMAF Core and returns the calculated MMFG
java.util.Vector<java.lang.String>	<b>queryByKeyword</b> (java.lang.String auth_token, java.lang.String keywords)	returns a list of similar assets for a given keyword
void	<b>setProcessingPlugins</b> (java.lang.String auth_token, java.util.Vector<java.lang.String> plugins)	sets the classes of the processing plugins (optional)

More Details can be found here:

[http://www.stefan-wagenpfeil.de/public/GMAF/javadoc/de/swa/gmaf/api/GMAF\\_Cacade.html](http://www.stefan-wagenpfeil.de/public/GMAF/javadoc/de/swa/gmaf/api/GMAF_Cacade.html)